



Learner's Guide

Version 2.0 December 2016



Frontmatter

This instructional mini-course was created as part of a Master's Degree class on Instructional Design during the University of New Mexico Fall 2016 term.

Course Designer: Andrew "Drew" Schneider
OILS 543- Instructional Design
Fall 2016

Acknowledgements:

Special Thanks: Dr. Tim Castillo, UNM ARTS Lab Director

Learners from Dr. Castillo's **Emerging Technology for Designers** Course
Fall 2016

Al Lucero, Abram Rowe, and John Shelton who provided insight into the needs of the end users of the virtual tours.



Table of Contents

| | |
|---|-------------------|
| Course Overview | Page 4 |
| 360 Virtual Tour Demo Links | Page 5 |
| Software Download Links | Page 5 |
| Ricoh Theta S Software and Mobile App | |
| Kolor Panotour Pro Trial Download | |
| About the Humorous Tour | Page 6 |
| Adobe Photoshop Image Editing Links | Page 7 |
| Kolor Panotour Screenshots | Page 8-17 |
| Individual Project Selection Homework | Page 18 |
| Sample Before & After Images | Page 19 |
| Links to Sample Before/After Images and Images for Module 2B | Page 20 |
| Photographic Term Glossary | Page 21-22 |



Course Summary

Week 1

Module 1A: Project Intro
-Individual Tour
-Group Tour (Humorous)

Module 1B: Selecting the Location

Module 1C: Hands on Instruction of Ricoh Theta S Camera

Week 2

Module 2A: Min Photo Edits Required

Module 2B: Intro to PanoTour Pro Software

Week 3

Module 3A: PanoTour Pro Plug-in/Spots Presentations

Week 4

Module 4A: In-Class Work
-Group Virtual Tour Creation Work In Class

-Instructor meets with each group to give feedback on tour development

Week 5

Module 5A: Group Humorous Virtual Tour Due & Group Presentations In Class

Week 6

Module 6A: In-Class Individual Tour Creation

-Instructor Meets with Each Learner to Provide Feedback on Virtual Tour

Week 7

Individual Virtual Tour Projects Due at Start of Week.

Optional: Individual Presentations



Resources

360 Virtual Tour Demo Links:

World Trade Center Memorial (360cities.net) <http://www.360cities.net/search?utf8=%E2%9C%93&query=world+trade+center+memorial>

Guggenheim Museum (360cities.net) <http://www.360cities.net/search?utf8=%E2%9C%93&query=guggenheim+museum>

Alcatraz (fullscreen360.com) <http://www.fullscreen360.com/alcatraz>

Other 360 Virtual Tours exist online. These were chosen for their historical/cultural value. 360cities.net has thousands of locations across the world represented.

Software Download Links:

Ricoh Theta S Software for MAC/PC and Apple/Android Mobile Devices: <https://theta360.com/en/support/download/>

Ricoh Theta S User Guide: <https://theta360.com/en/support/manual/s/>

Kolor PanoTour Pro: <http://www.kolor.com/download/> ***MUST BE PANOTOUR PRO.***

The other PanoTour does not have the same features as the Pro version.

Kolor PanoTour Pro Online User Guide: http://www.kolor.com/wiki-en/action/view/Panotour_Documentation



Humorous Tour Info

Humorous Tour Information:

The humorous tour is intended to focus your group's effort towards learning the process and the Panotour Pro software. Your topic must be respectful and demonstrate effective humor. Do not create images that are sexist, racist, derogatory, or intended to embarrass another person or group. Your goal is to include "Plug-ins" and "Spots" in the virtual tour you create. What you learn during the group project will help you create your individual project. You are encouraged to "push the envelope" with your 360 virtual tour design.

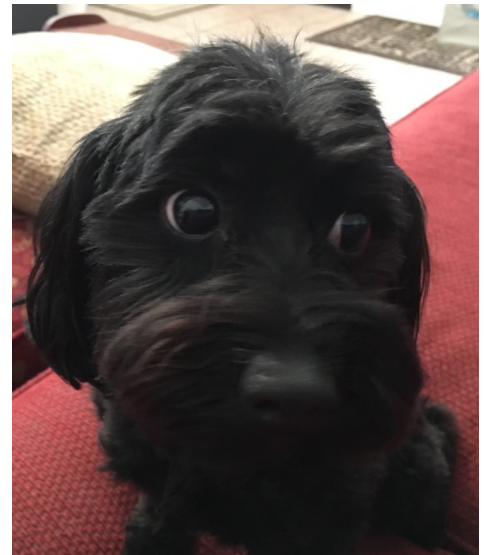
Examples:

Learners could attempt to make several manikin challenge style images using the Theta camera. Sample manikin challenge links:

Chicago Fire Dept: <https://www.youtube.com/watch?v=V80GR3AxEPU>

Dogs: <https://www.youtube.com/watch?v=q29IHs-A6TA>

Other images can be created using photo editing techniques or just plain optical trickery.



The key is that the image will be a 360 image and there will be more "room" to create a visual message.



Resources

Adobe Photoshop Image Editing Links:

Lynda.com Tutorial Videos (UNM Students have access to this online training resource)

Basic: <https://www.lynda.com/Lightroom-tutorials/Remove-unwanted-objects-Photoshop/435787/462284-4.html>

Advanced: <https://www.lynda.com/Lightroom-tutorials/Remove-unwanted-objects-Photoshop-Advanced/435787/462285-4.html>

Using the "Clone" tools: <https://www.lynda.com/Lightroom-tutorials/Removing-unwanted-objects-cloning-Photoshop/438406/471557-4.html>

Web Link: (Note there are many web guides that are useful. This is just a sample)

Macworld.com: <http://www.macworld.com/article/2980359/software-photography/how-to-remove-objects-in-your-photos-with-photoshop-s-content-aware-tools.html>



Resources

Kolor Panotour Pro Screenshots:

These screenshots are not intended to be a step-by-step guide for performing the task of creating a 360 virtual tour. These images are intended to be a set of key points in the process and what the screen will look like at each of these points.

Note: These images are of Panotour Pro 2.5. Updated versions or prior versions will look different.

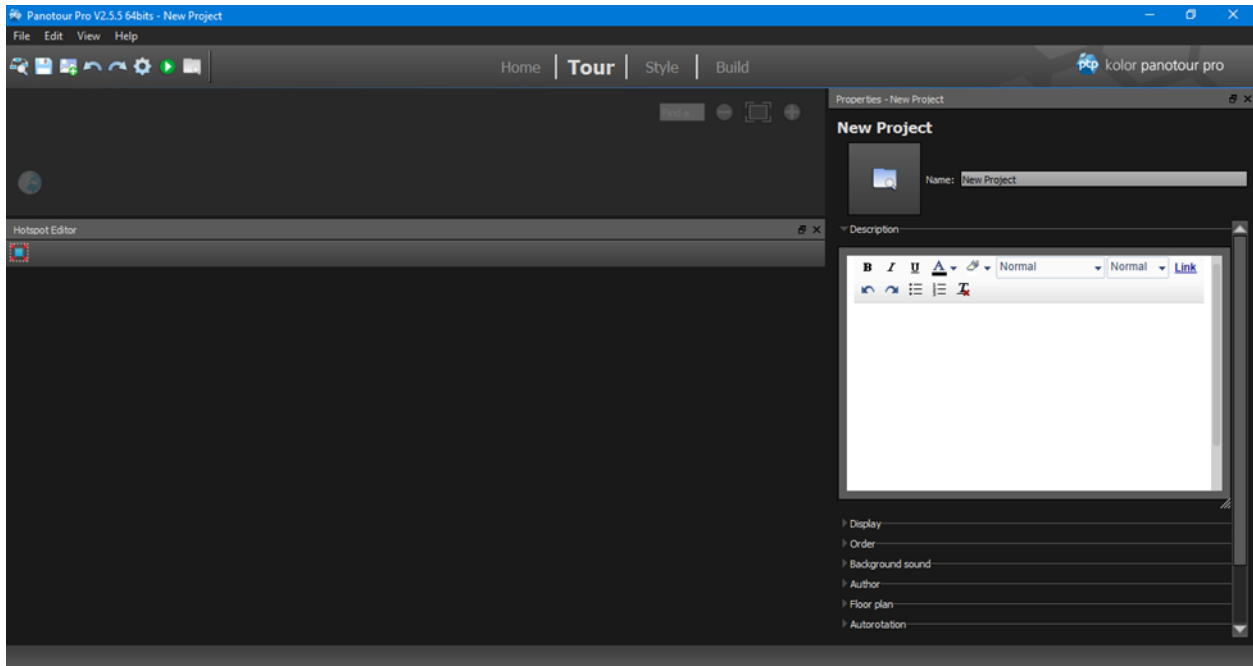


Panotour Pro Home Screen



Resources

Kolor Panotour Pro Screenshots:



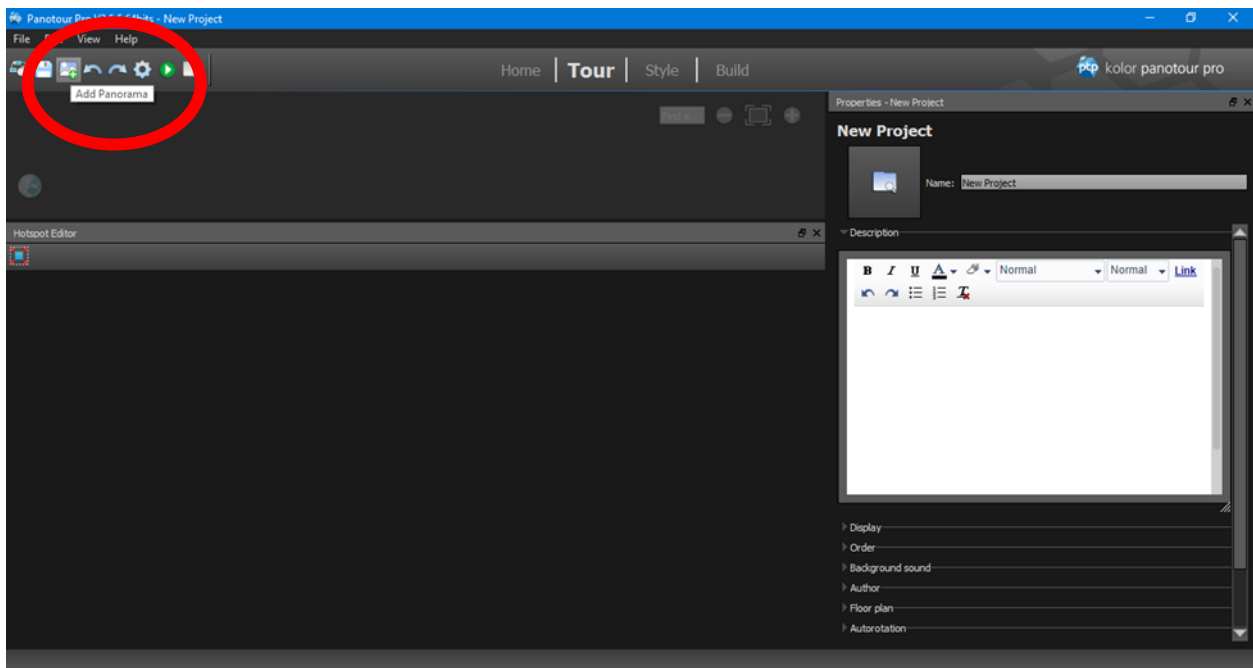
Starting a New Tour

No 360 images loaded yet.



Resources

Kolor Panotour Pro Screenshots:

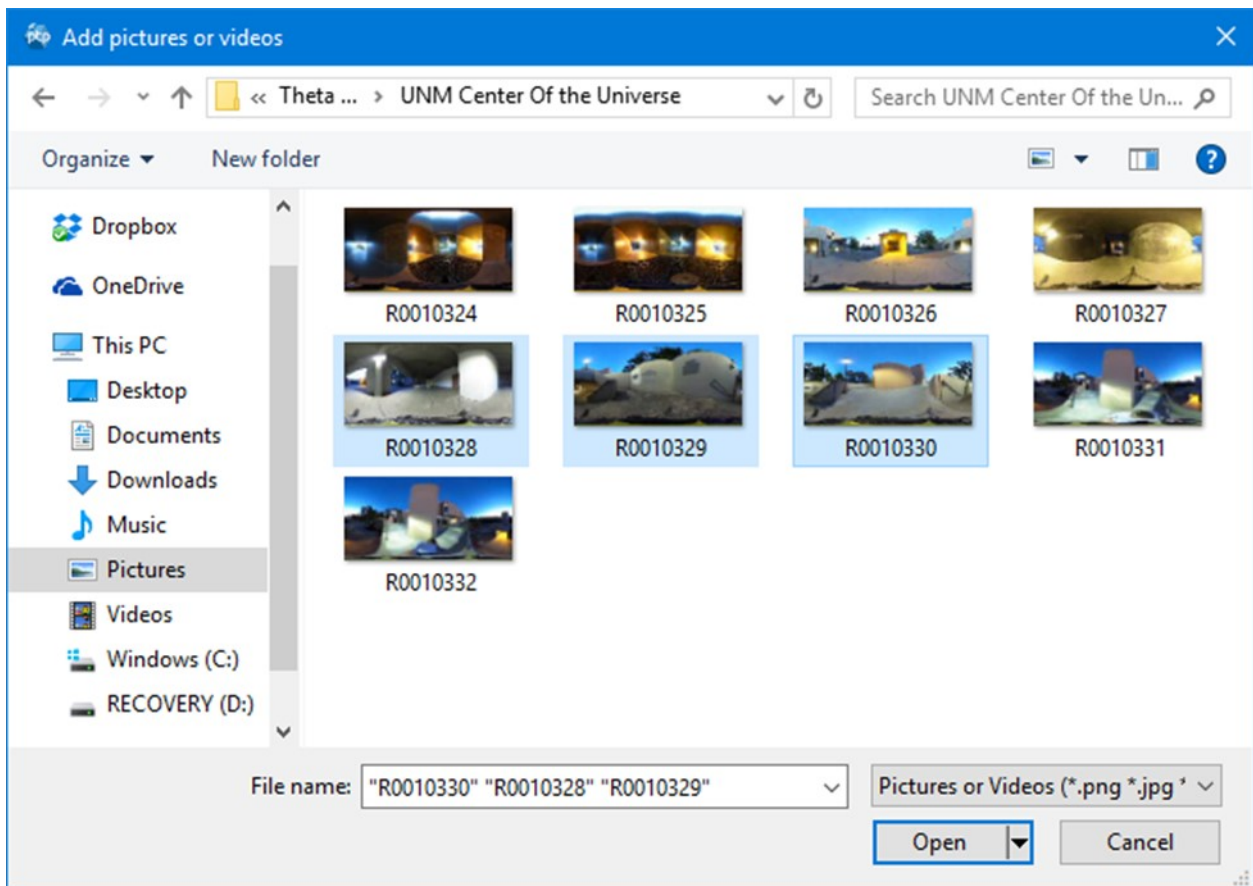


Adding 360 Images to Tour



Resources

Kolor Panotour Pro Screenshots:



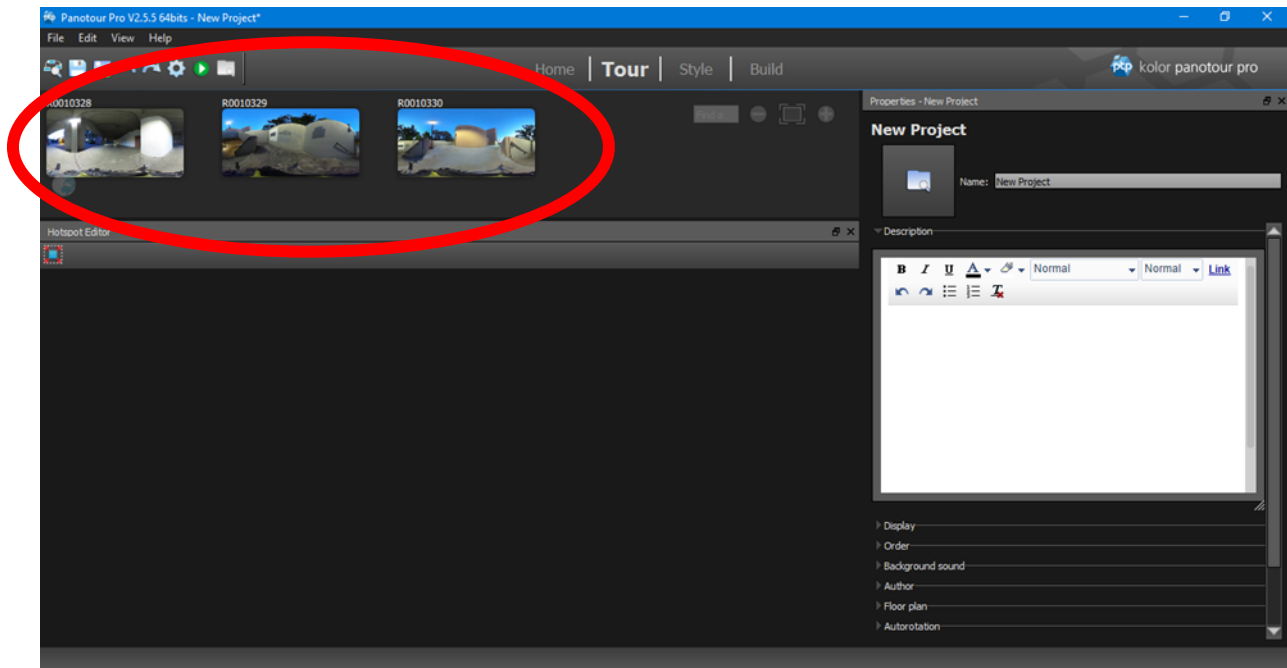
Selecting Images to Add to Tour

This is from a PC. MAC user interface will look different.



Resources

Kolor Panotour Pro Screenshots:



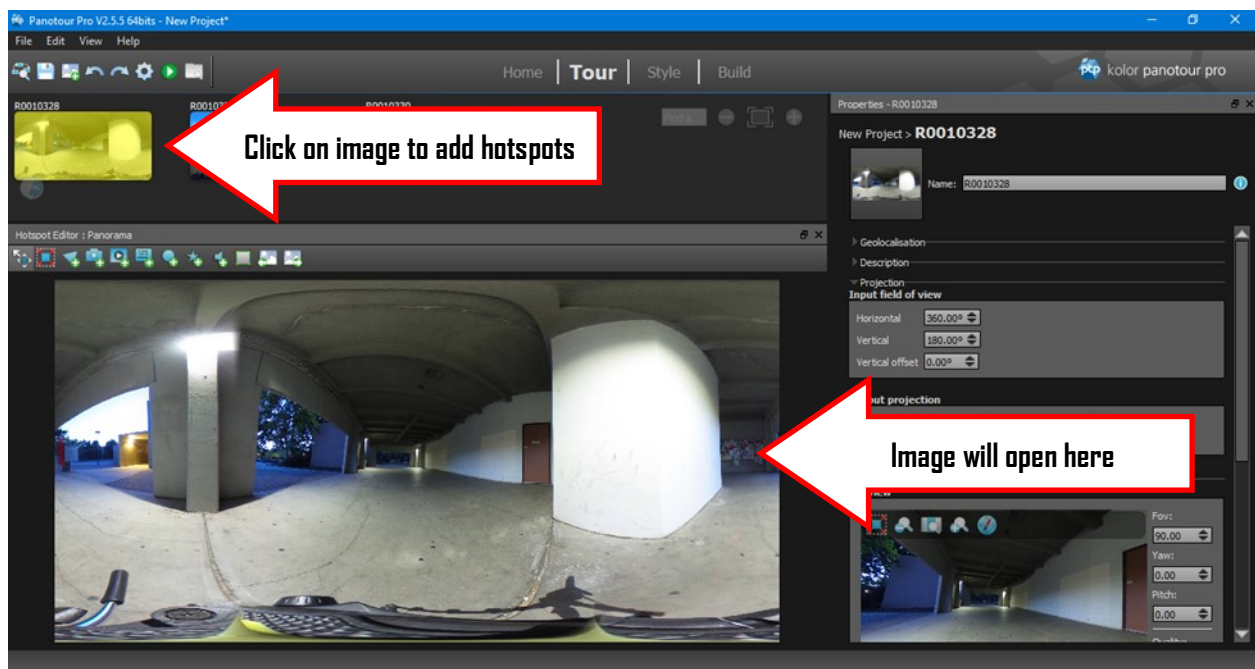
Images added to Tour

In this example three (3) images were added.



Resources

Kolor Panotour Pro Screenshots:



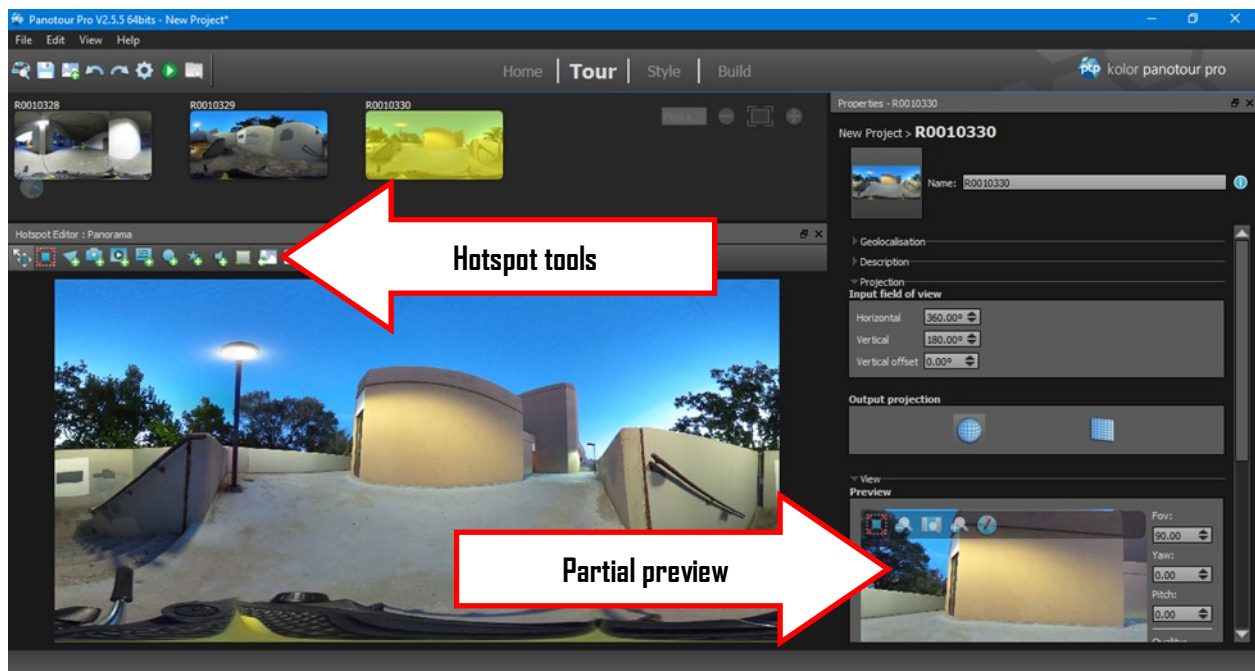
Editing Image and adding Hotspots

Click on an image to add hotspots and other elements to tour.



Resources

Kolor Panotour Pro Screenshots:



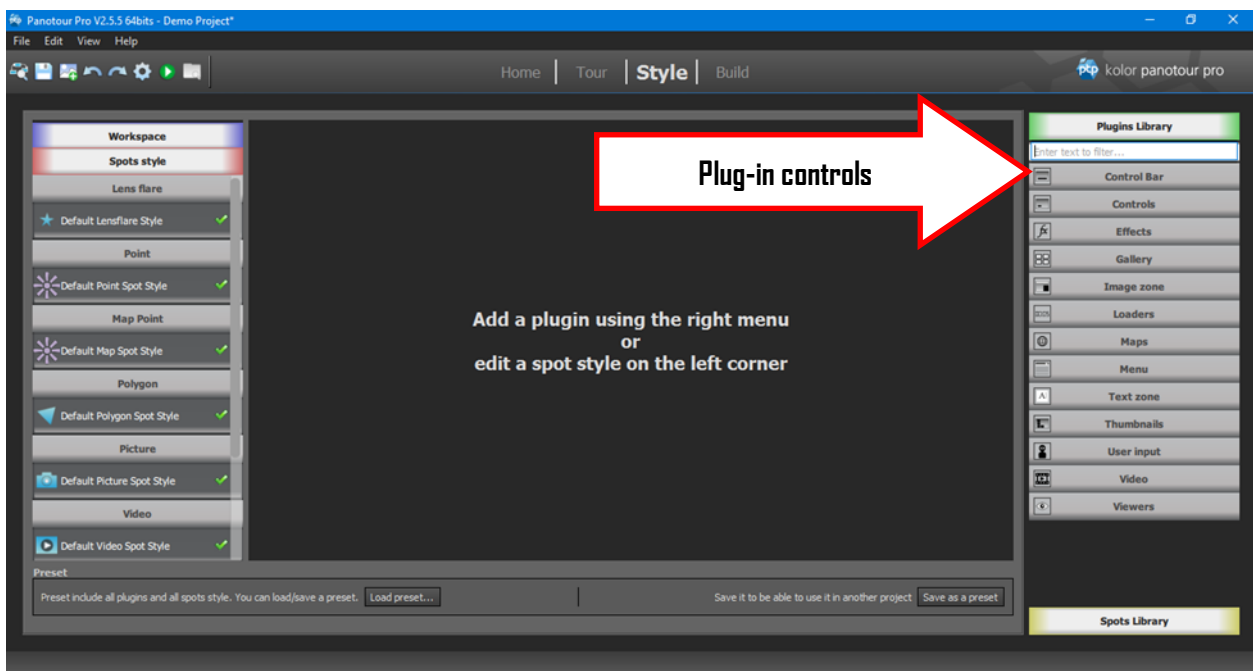
Editing Hotspots

Partial preview will show some elements of the tour being created.



Resources

Kolor Panotour Pro Screenshots:



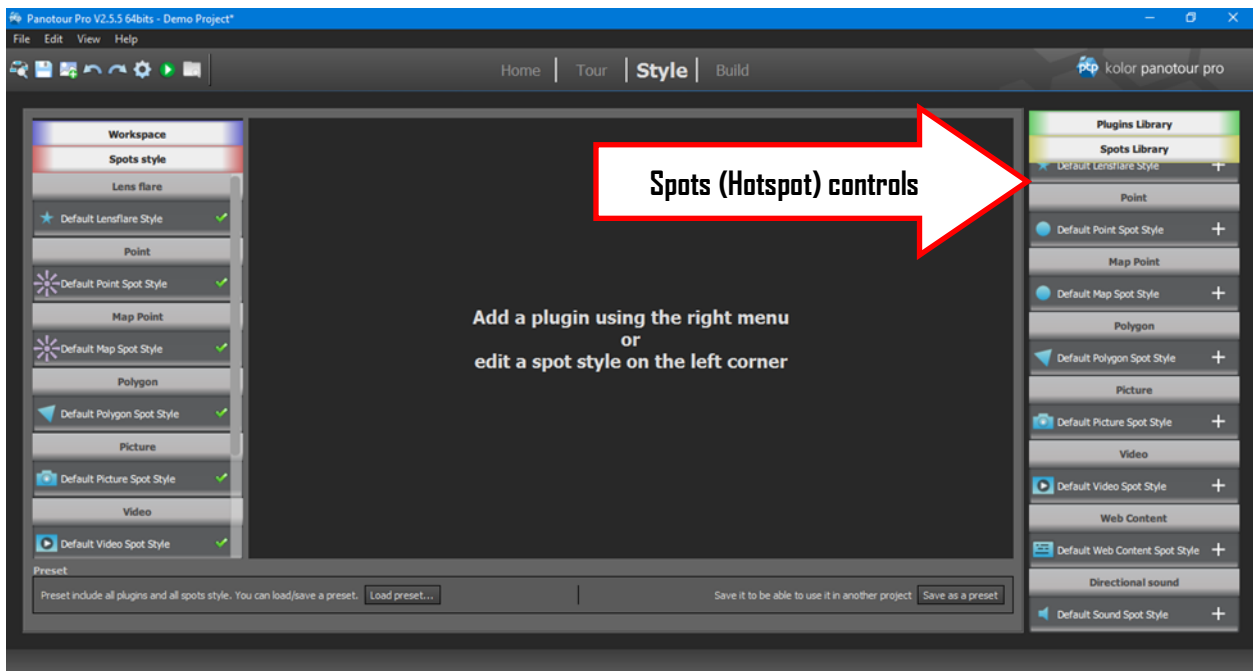
Style Screen

The Style screen controls most of the features of the virtual tour and how the tour will appear once completed.



Resources

Kolor Panotour Pro Screenshots:



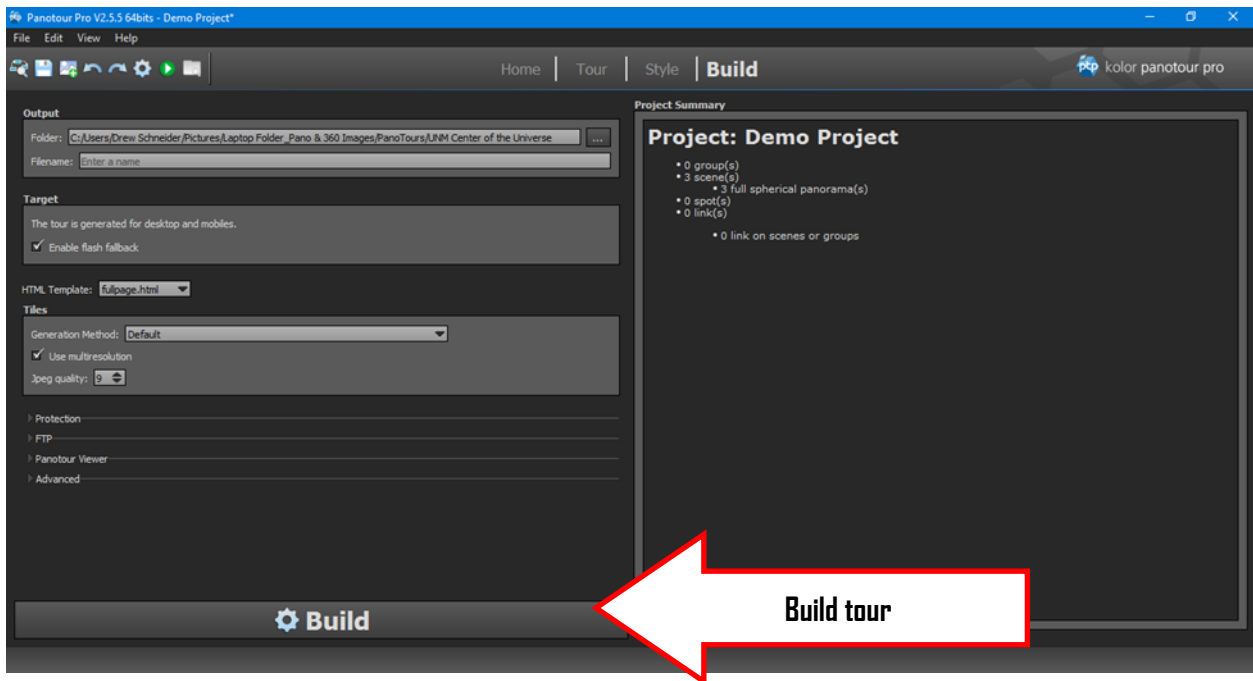
Style Screen-Spots

This menu will control how the hotspots appear in the tour.



Resources

Kolor Panotour Pro Screenshots:



Build Tour Screen

This screen is where the tour is created.



Resources

Individual Project Selection Homework (Historical/Cultural Location)

Name: _____

- 1) Name of Location: _____
- 2) Describe your rationale for selecting this location and why it has historical/cultural importance.
(500 words min/1000 words max)
- 3) Supporting Citations:

Learners should submit this homework typed on the beginning of week 2.



Resources

Sample Before/After Images:





Resources

Links to Sample Before/After Images:

Before Image Link: <http://simminion.com/360VirtualTourID/UNM%20Center%20of%20the%20Universe-Before.jpg>

After Edits Image Link: <http://simminion.com/360VirtualTourID/UNM%20Center%20of%20the%20Universe-After.jpg>

Links to Sample Images for Module 2B: Intro to PanoTour Pro

Image 1 Link: <http://simminion.com/360VirtualTourID/360Sample1.JPG>

Image 2 Link: <http://simminion.com/360VirtualTourID/360Sample2.JPG>

Image 3 Link: <http://simminion.com/360VirtualTourID/360Sample3.JPG>

**Online Resources No Longer Exist.
As of Jan 2018**



Resources

Photographic Term Glossary:

This glossary is intended to be a guide for those wishing to use the Ricoh Theta camera in manual shooting mode. Manual shooting mode will allow the photographer greater control of the images created. In many situations, manual control allows the photographer to adapt and overcome challenges in image composition. These settings apply to the Theta S camera.

Aperture: Is the size of the opening in the camera that lets light pass through. This is also called the *f-stop*. The larger the opening the more light will come through. The f-stop scale goes from small numbers to large numbers. Small numbers indicate large opening and large numbers indicate small openings. The Theta camera has a fixed f-stop of 2.0. This means a large amount of light can pass through.

ISO: ISO is a setting that determines how sensitive the sensor is to light hitting it. Low ISO settings (100-200) are less sensitive to light and are common for daylight and bright light photography. High ISO settings (800-1600) allow the camera to be more sensitive to light and are useful for low light photography. There is an important concept to remember when using ISO settings. The higher the ISO setting the more “grainy or pixelated” the image will appear. Typically, you will want to use as low of an ISO setting as possible to reduce grainy image appearance. In some situations a level of graininess is needed to capture an image. Adobe Photoshop has features that will reduce the graininess, but not completely remove it.



Resources

Photographic Term Glossary:

Shutter Speed: Shutter speed is how quickly the image will be taken. The setting is based off seconds. A shutter speed of 1/100 takes an image in 1/100th of a second. Keep in mind that the world does not stand still. If the shutter speed is too slow the objects in motion in the image will be blurred. You can also think of the shutter speed as how much light will enter the camera for that image. The Theta S camera has shutter speeds from 1/6400th of a second to 60 seconds. Longer shutter speeds also increases the amount of light and how bright the image will appear.

White Balance: White Balance is a setting that can be used to adjust the color of the image. Crudely speaking...white looks differently under different light sources. White appears one way in bright sun and another way under the light from a light bulb. This setting allows you to adjust this balance based on what light is going on. The Theta does have the ability to "Auto white balance" and make the choice for you. Sometimes you may want to set this to adjust for lighting conditions. The camera will have problems setting a proper in mixed light. For example, if you have a mix of bright light and shadows in the image (location) the camera may not automatically set the best white balance.

